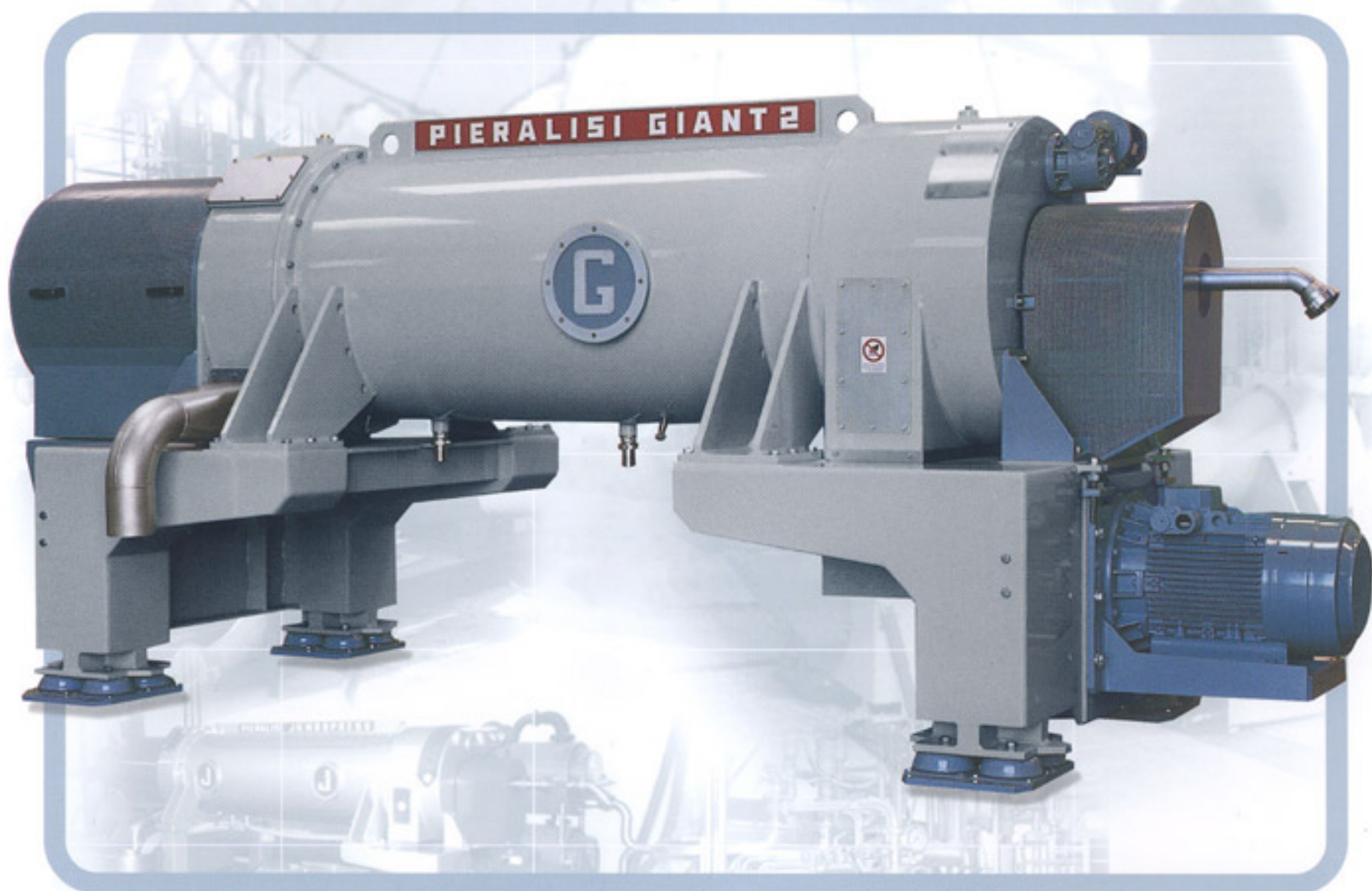


INDUSTRIAL DIVISION

CENTRIFUGAL EXTRACTOR

**GIANT2**



GRUPPO

**PIERALISI**

## CENTRIFUGAL EXTRACTOR GIANT2

*Our GIANT 2 centrifugal extractor is equipped with:*

- special device to regulate the liquid ring inside the bowl
- platform and cylindric bowl housing made in carbon steel
- patented sludge scraper for continuous discharge of dewatered sludge from the solids discharge chamber
- special wear-proof protection on peripheral screw area

- electronic safety device for overload protection, with optional visual or acoustic alarm signals
- hard-metal protection bushes on solids discharge holes
- electronic revolution counter as standard equipment

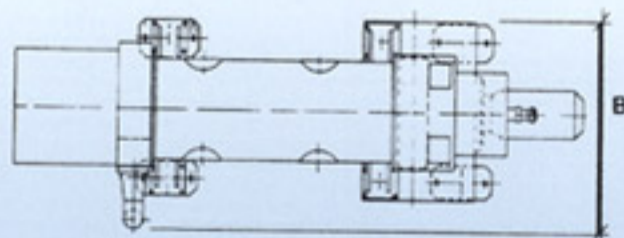
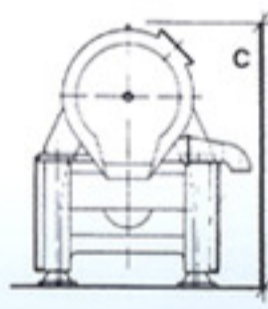
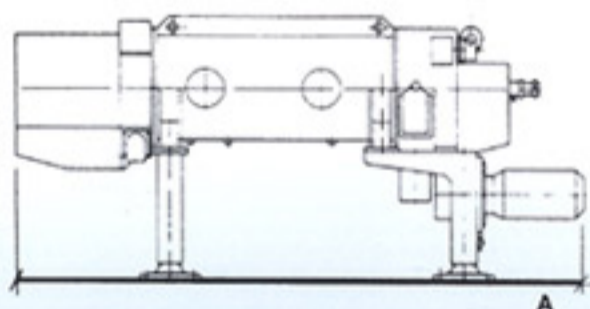
- standard device for continuous modifications of the revolution speed of the internal screw.

**ALL PARTS IN CONTACT WITH PRODUCT IN STAINLESS STEEL**



**GIANT2**

Model	Main motor power kW	Rotovaniator power kW	Drum revolution max rpm	Centrifugal force max x g	Slenderness ratio L/D	Drum diameter mm	Hydraulic capacity l/h	Weight kg
<b>GIANT2</b>	75 + 110	22 + 38	2,000	1,570	3.59	700	110,000	9,800



Model	Total length A mm	Total width B mm	Total height C mm
<b>GIANT2</b>	5,200	2,200*	2,200

\*3250 mm with stabilizers

The company reserves the right to modify the features of its products without notice. Registered trademarks. Advertising material © copyright. All rights reserved.

GRUPPO

**PIERALISI**

Via Don Battistoni, 1 - 60035 JESI (AN) - Italy - Tel. +39-0731-231.1 - Fax +39-0731-231.239  
www.pieralisi.com - info@pieralisi.com